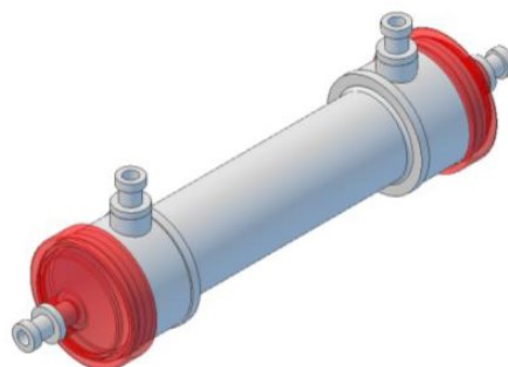
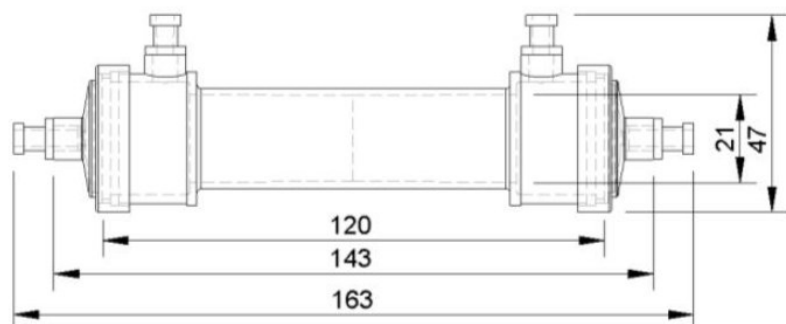


Hollow fiber cartridge 20 kDa (non-sterile)

KDA0032 LARGE SIZE



Membrane

Membrane material:	High flux polysulfone, hydrophilic
Geometry (ID/OD):	200 μ m/ 280 μ m
MWCO / pore size:	20 kDa (50% retention at rated MW, full retention of 100 kDa protein)

Housing

Material of housing:	Polycarbonate
Dimensions:	see drawing
ICS Connectors:	2 x Female Luer (polycarbonate)
ECS Connectors:	2 x Female Luer (polycarbonate)
Potting material:	Polyurethane

Module

Number of fibers:	2850 +/- 100
Package density:	~ 50%
Active fibre length:	100 +/- 3mm
Inner Outer fibre surface:	1800 cm ² 2500 cm ² (+/- 20 cm ²)
Intracapillary volume:	10.5 ml
Extracapillary volume:	17.5 ml
Pressure tested:	1.5 bar

Miscellaneous

Quality control:	100% integrity tested (housing and fiber)
Sterility:	Non-sterile (for sterile version please enquire)

Cautions

Storage:	dry, 5—40°C
Usage:	Single use, do not autoclave