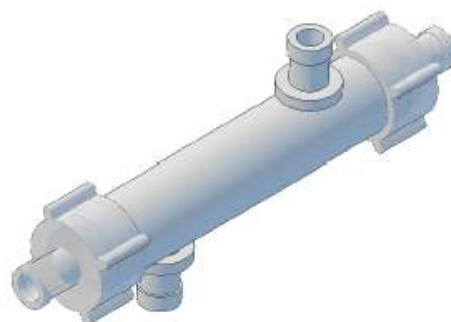
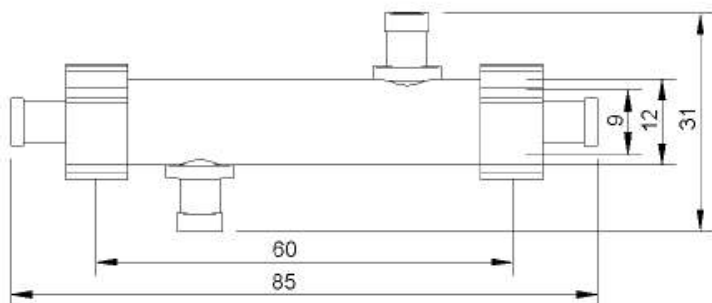


# Hollow fiber cartridge 5 kDa

SMALL SIZE Cat.# 00510100



## Membrane

Membrane material:	High flux polysulfone, hydrophilic
Geometry (ID/OD):	200µm/ 280µm
MWCO / pore size:	5 kDa (50% retention at rated MW, suitable for full retention of 20 kDa cytokine)

## Housing

Material of housing:	Polycarbonate
Dimensions:	see drawing
ICS Connectors:	2 x Female Luer (polycarbonate)
ECS Connectors:	2 x Female Luer (polycarbonate)
Potting material:	Polyurethane

## Module

Number of fibers:	465 +/- 20
Package density:	~ 45%
Active fibre length:	45 +/- 2mm
Inner  Outer fibre surface:	130 cm <sup>2</sup>   180 cm <sup>2</sup> (+/- 5%)
Intracapillary volume:	0.9 ml
Extracapillary volume:	1.6 ml
Pressure tested:	1 bar

## Miscellaneous

Quality control:	100% integrity tested (housing and fiber)
Sterility:	Non-Sterile (for sterile version please enquire)

## Cautions

Storage:	dry, 5—40°C
Usage:	Single use, do not autoclave