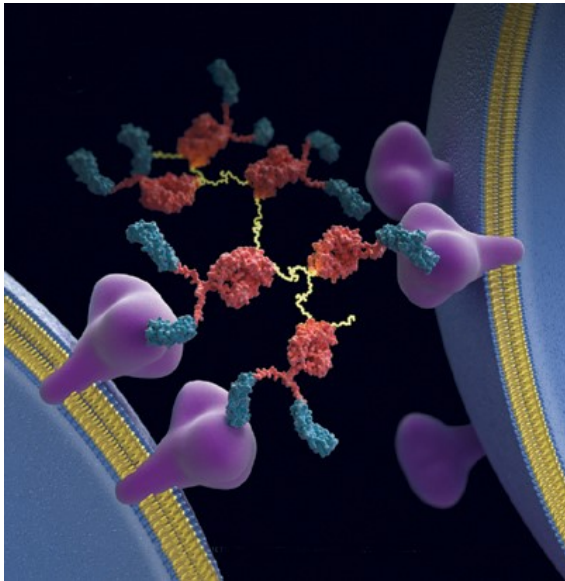


Efficient Production of “Difficult” Recombinant Proteins

Harvest 2 - 8 milligrams per day in convenient low volumes



A FiberCell hollow fibre bioreactor maintains more cells in a smaller space than any other culture method and so can produce much greater amounts of recombinant proteins and antibodies with more convenience and lower cost.

- Gentle, constant, “in vivo like” conditions over long periods of production
- Typically 100X more concentrated
- Small harvest volumes—15ml / 60ml
- Cell passaging not required
- Many customer publications available

What makes this culture system radically different?

A FiberCell cartridge is capillarized with hollow fibres to provide a huge area of porous semi-permeable surface for the dynamic perfusion of CHO, HEK293, BHK or other cell types by recirculating media. Efficient exchange of nutrients, gases and waste products with cells in the extra-capillary space enables long-term, high density *in vivo*-like conditions to ensure optimal productivity, folding and glycosylation.

Harvest clean, concentrated secreted products

Secreted proteins are retained by the fibre MWCO (5 kD or 20 kD) and accumulate in the extra-capillary space to high concentrations. Daily harvesting of clean, concentrated product can be performed over weeks or months as needed.

Chemically defined media

Cells lose their dependence on serum in high cell density culture. This means that it is easy to use protein-free, chemically-defined, surfactant-free media . FiberCell has developed a low cost additive mix for basal media that replaces serum: [CDM-HD](#).



CONTACT KDBIO for more information: info@kdbio.com +33 3 88 26 12 86 www.kdbio.com